
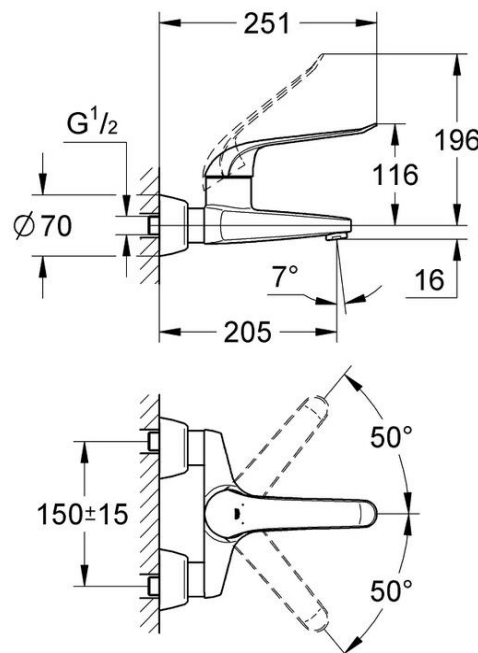




PROJECT		REF		REV	ITEM CODE	
LOCATION		DATE			PAGE	

## SANITARY WARE SPECIFICATION SHEET

Item Descriptions	GROHE (Germany) "Euroeco Special" Wall mounted single lever basin mixer (lever length 170mm); nominated flow rate <b>5.3 L/min</b> in WELS <b>Grade 2</b> ; Registration No. TM 21-0126	Illustration/ Drawing
Dimensions	L251 x W150 x H70 mm	
Model	32778000	
Finish	Chrome Plated	
Country of origin	Germany	
Manufacturer	GROHE Limited	
Supplier	Acme Sanitary Ware Co. Ltd Mr. Eric Wong/ Mr. Don Yuen	
Contact Tel/Fax	(852) 2388-7171 / (852) 2710-8012	
E-mail	acme@acmesanitary.com.hk	
Website	www.acmesanitary.com.hk	
<p><b>"Euroeco Special"</b> <b>Basin mixer 1/2 "</b></p> <ul style="list-style-type: none"><li>• wall mounted</li><li>• <b>GROHE StarLight</b> chrome finish</li><li>• <b>GROHE SilkMove</b> 46 mm ceramic cartridge</li><li>• <b>GROHE EcoJoy</b> technology for less water and perfect flow</li><li>• adjustable flow rate limiter</li><li>• adjustable temperature limiter</li><li>• adjustable minimum flow rate 2.5 l/min</li><li>• laminar flow straightener 9 l/min</li><li>• cast spout</li><li>• projection 205 mm</li><li>• metal lever</li><li>• lever length 170</li><li>• mm S-unions</li></ul>		

### Note:

\* All information of the above is for the reference only. No prior notice is made if any changes.



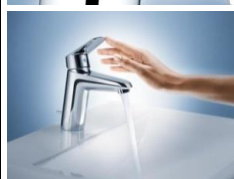
PROJECT		REF		REV	ITEM CODE	
LOCATION		DATE			PAGE	

## SANITARY WARE SPECIFICATION SHEET



### Easy to clean thanks to the GROHE StarLight chrome coating

Just wipe the tap down with a dry cloth – the ultra smooth surface finish is scratch resistant and ensures a lasting luminous sheen. You'll save plenty of time cleaning while your tap always looks shiny and new.



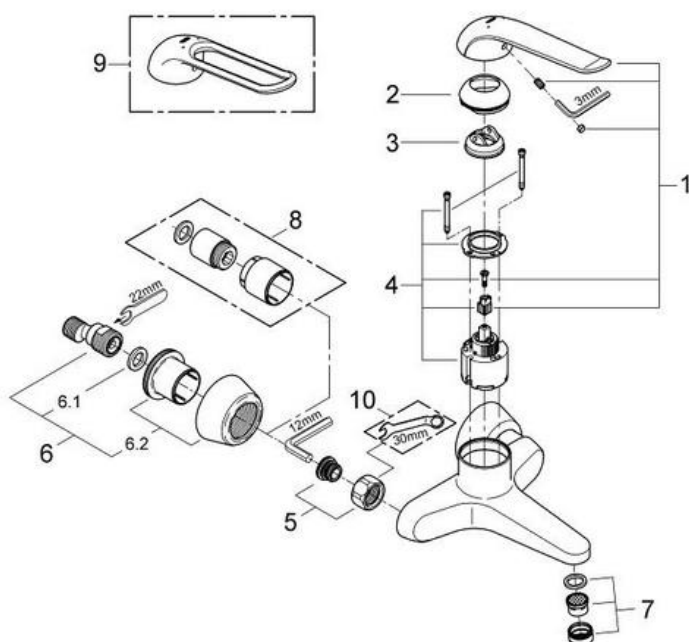
### GROHE SilkMove cartridge technology for smooth handling

This premium tap comes with a continuously variable water temperature and volume adjustment technology, ensuring effortless lever operation even after years of use.



### GROHE EcoJoy with water-saving function for reduced consumption

GROHE EcoJoy reduces water consumption by up to 50% without compromising on performance. Whenever you turn on your tap, you will enjoy a full jet of water while saving money nonetheless.



Pos.-nr.	Prod. description	Order-nr.
1	Lever 170 mm	46689000
2	Cap	46570000
3	Temperature limiter	46375000
4	Cartridge	46048000
5	Screw connection 1/2"	45044000
6	S-union	12058000
7	Laminar flow straightener	13960000
8	Extension set, 30 mm	46238000*
9	Lever 160 mm	32871000*
10	Special spanner	19377000*

\* Optional accessories

Note:

\* All information of the above is for the reference only. No prior notice is made if any changes.

註冊號碼 (Registration No.):

TM 21-0126



自願參與用水效益標籤計劃 - 水龍頭  
Voluntary Water Efficiency Labelling Scheme - Water Taps



茲證明  
This is to certify that

將下列水龍頭在本計劃內註冊：  
has registered the following water tap under this scheme :

牌子 / Brand	:	Grohe
型號 / Model	:	32778XXX + 403655031
種類 / Type	:	Mixing
原產地 / Country or Region Origin	:	Germany (Mixer & Flow Controller)

XXX – denotes the code of colour

在用水效益標籤上展示的標誌

*Symbolic Presentation on the Water Efficiency Label*



滴水點

*Water droplet(s)*

用水效益級別

*Water Efficiency Grade*

: 2

耗水量

*Water Consumption*

: 5.3

公升/分鐘

*litres/minute*

簽發日期：  
Date of Issue:

21 May 2021



水務署

Water Supplies Department



水務署署長(張業駒代行)  
for Director of Water Supplies





Department

二號入境事務大樓 48 樓  
48, Immigration Tower, 7 Gloucester Road, Wan Chai, Hong Kong

本署檔號 : ( 2 ) in WSD 3321/2020 T/J(1070/2020)  
Our ref.  
來函檔號 :  
Your ref.

電話 :  
Tel.  
傳真 : 2824 0578  
Fax.


24 September 2020



**Approval of "GROHE" Basin Mixer  
(General Acceptance No. C20200842)**

Your letter ref. WRC/2311 dated 13 August 2020 refers.

Having considered the test report ref. J24910A issued on 31 December 2019 by Nutek Systems (HK) Ltd., this Authority accepts that the fitting described below complies with, and its use when correctly installed does not contravene, the Waterworks Ordinance and Regulations.

**Name of Manufacturer:** Grohe AG  
**Country of Origin:** Germany  
**Brand:** Grohe  
**Details of Fitting:** 1/2" Single lever basin mixer  
**Model:** 32778XXX  
(where the digits "XXX" denote the code of colour)  
**Body Markings:** **GROHE**  
  
**Expiry Date:** 17 November 2024



This Authority hereby permits the use of the above fitting in fresh water plumbing systems subject to full adherence to Waterworks installation requirements. In particular, you are required to draw your customers' attention to the following requirement-

"The cold water supply to the fitting shall be drawn from the same source that supplies the hot water apparatus so as to provide a balanced pressure and to obviate the risk of scalding in the event of a restriction or failure in the water supply."

A condition of this acceptance is that the fitting to be installed shall be replicas of the sample as certified by the testing agent mentioned above and without modifications. This acceptance may be withdrawn at any time if the standard of the fitting installed fails to meet that of the approved sample or if the fitting is found to be unsuitable for use in fresh water plumbing systems.

This acceptance is only applicable to the main body of the fitting, unless otherwise specified.

For the use of the fitting in any project, the General Acceptance Number of this letter must be quoted as a means of identification of acceptance of the fitting by this Authority.

Should you have any enquiries, please contact our Engineer Mr. Terry KUNG at tel. no. 3583 4086.

Yours faithfully,



(CHAN Chung-kun)

for Director of Water Supplies

Encl.

c.c.      WSD 3321/1/82    ] - without catalogue  
             ME/MC            ] - with soft copy only